

6100/6200

Footswitch



Footswitch for auxiliary control of industrial machines. It acts on the machine motor through a power interface, such as a contactor.

FEATURES

- The emergency stop mushroom pushbutton complies with standard EN 418.
- Positive opening NC contacts for safety functions.
- Mechanical life of switches: 1 million operations.
- IP protection degree: footswitch 6100/6200 is classified IP53.
- Extreme temperature resistance: -25°C to +70°C.
- Made of plastic material or die-cast aluminium.
- Materials and components are shock and wear resistant.

CERTIFICATIONS

- CE marking.

OPTIONS

- Available with standard protection cover or large cover for safety shoes (6100 version).
- Single or double footswitches fixed on a metal plate, with emergency mushroom pushbutton.
- Special footswitch design for pneumatic valve with fixing plate (6100 version).
- It may be fitted with "lock-release" device used for keeping the pedal pressed or with safety device to prevent accidental operation.
- Snap or slow action switches with 1NO+1NC contacts, or slow action switches with 2NO+2NC contacts.

Fill in the "request form" for accurate product configuration.


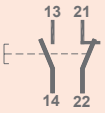
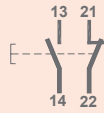
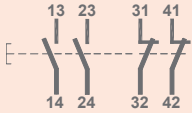
CERTIFICATIONS

Conformity to Community Directives	2014/35/UE Low Voltage Directive
	2006/42/CE Machinery Directive
Conformity to CE Standards	EN 60204-1 Safety of machinery - Electrical equipment of machines
	EN 60947-1 Low-voltage switchgear and controlgear
	EN 60947-5-1 Low-voltage switchgear and controlgear - Control circuit devices and switching elements - Electromechanical control circuit devices
	EN 60529 Degrees of protection provided by enclosures
Markings and homologations	CE

GENERAL TECHNICAL SPECIFICATIONS

Ambient temperature	Storage -40°C/+70°C
	Operational -25°C/+70°C
IP protection degree	IP 53
Insulation category	Class I
Cable entry	Cable clamps M20

TECHNICAL SPECIFICATIONS OF THE SWITCHES

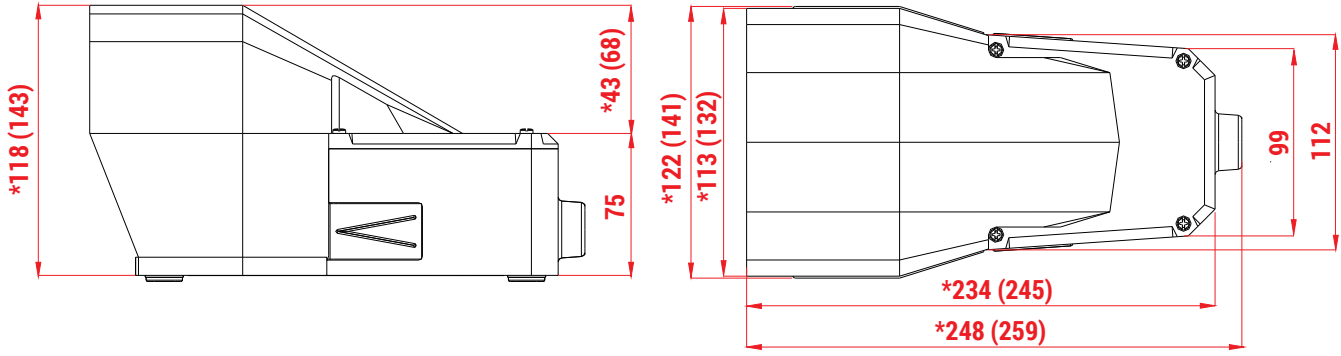
Code	PRSL0036XX	PRSL0045PI	PRSL0047PI
Utilisation category	AC15		AC 15
Rated operational current	3 A		1,9 A
Rated operational voltage	250 Vac		380 Vac
Rated thermal current	10 A		10 A
Rated insulation voltage	300 Vac		500 Vac
Mechanical life	1x10 ⁶ operations		
Connections	Screw-type terminals		
Wires	1x2.5 mm ² , 2x1.5 mm ² (UL - (c)UL: use 60°C or 75°C copper (CU) conductor and wire 16-18 AWG)		
Tightening torque	0.8 Nm		
Microswitch type	Double break, snap action	Double break, slow action	Double break, slow action
Contacts	1NO+1NC (All NC contacts are of the positive opening operation type )	1NO+1NC	2NO+2NC
Scheme			
Markings and homologations	CE cUL _{us} EAC		CE cUL _{us}

FOOTSWITCH 6100 - OVERALL DIMENSIONS (mm)

Simple

* with standard protection

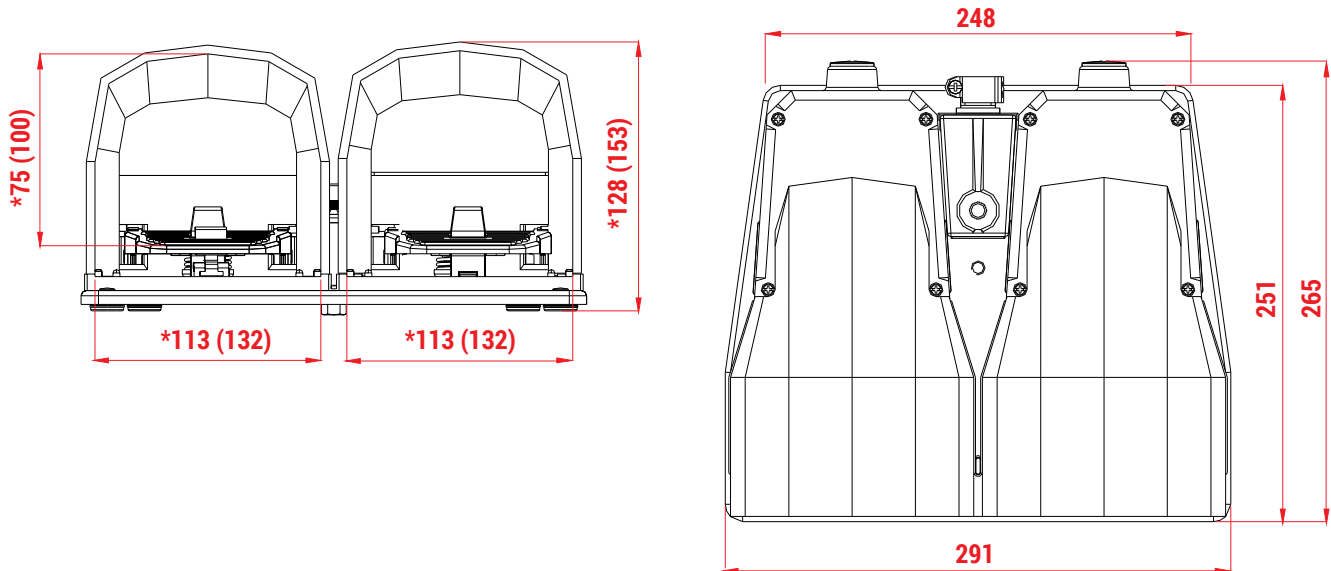
() with large protection



Double

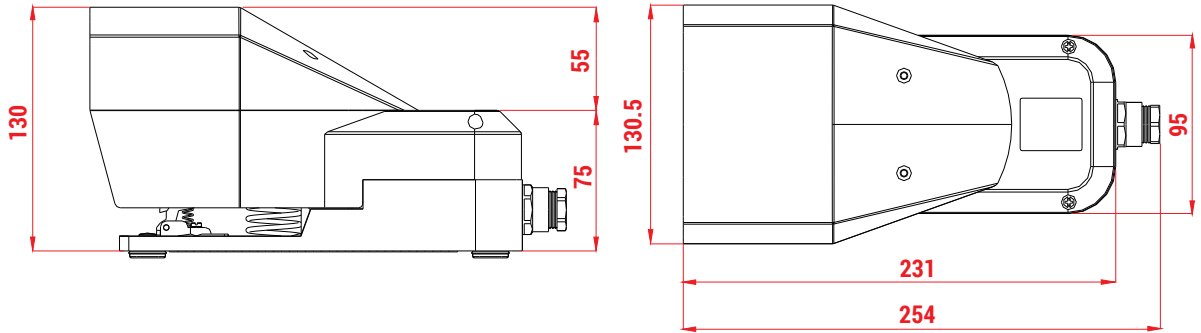
* with standard protection

() with large protection

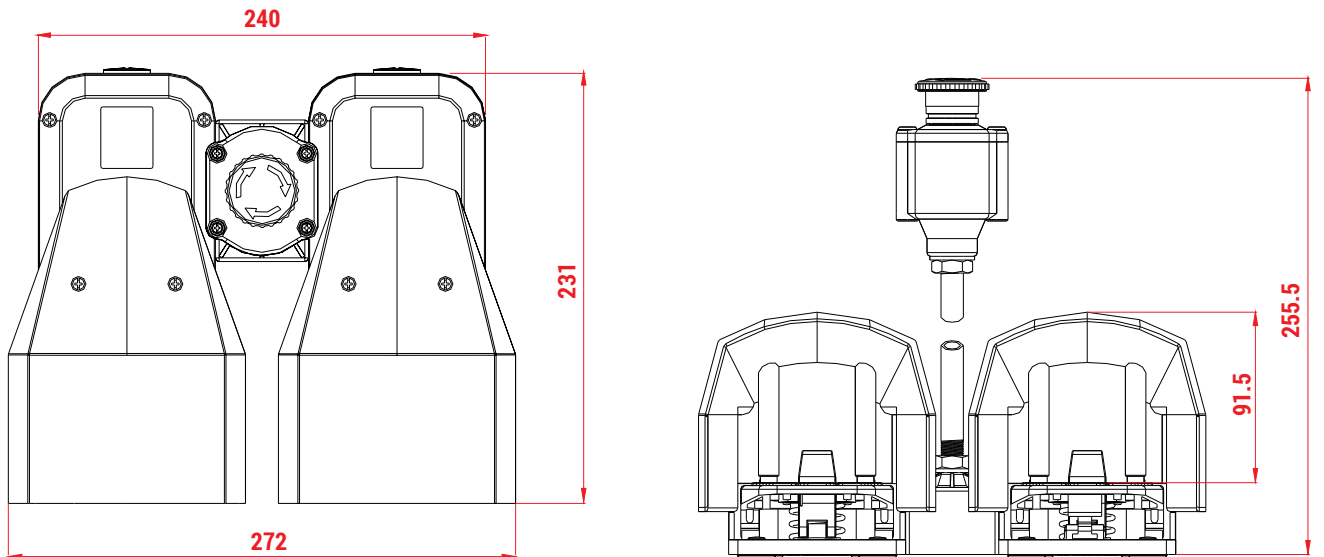


FOOTSWITCH 6200 - OVERALL DIMENSIONS (mm)

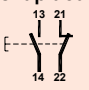
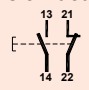
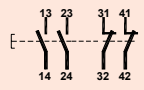
Simple



Double



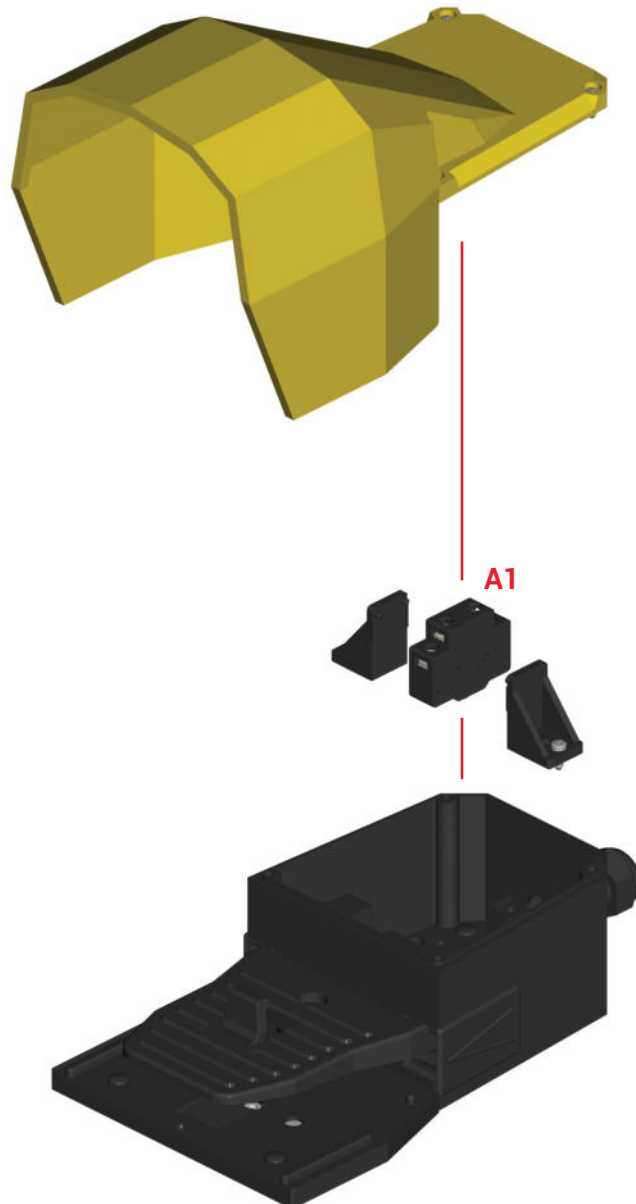
STANDARD 6100 FOOTSWITCHES

Material	Footswitch type			Protection		No. of switches			Code
	Simple	Double	For valves	Standard	Large	PRSL0036XX 1NO+1NC snap action 	PRSL0045PI 1NO+1NC slow action 	PRSL0047PI 2NO+2NC slow action 	
Plastic	X				X	1			PF04612100
	X				X	2			PF04612200
	X				X	3			PF04612300
	X				X		1		PF04612500
	X				X			1	PF04612600
	X				X		1	1	PF04612700
	X				X			2	PF04612800
		X			X	2			PF04613100
		X			X	4			PF04613200
		X			X		2		PF04613300
		X			X			2	PF04613400
		X			X			4	PF04613500
		X		X	X				PF04814100
		X		X	X				PF04814600
Aluminium	X			X		1			PF04615100
	X			X		2			PF04615200
	X			X		3			PF04615300
	X			X			1		PF04615500
	X			X				1	PF04615600
	X			X			1	1	PF04615700
	X			X				2	PF04615800
		X		X		2			PF04616100
		X		X		4			PF04616200
		X		X			2		PF04616300
		X		X				2	PF04616400
		X		X				4	PF04616500
		X			X		1		PF04617100
		X			X		2		PF04617200
		X			X		3		PF04617300
		X			X			1	PF04617500
	X			X				1	PF04617600
	X			X		1	1	PF04617700	
	X			X				2	PF04617800
	X			X		2		PF04618100	
	X			X		4		PF04618200	
	X			X			2	PF04618300	
	X			X				2	PF04618400
	X			X				4	PF04618500

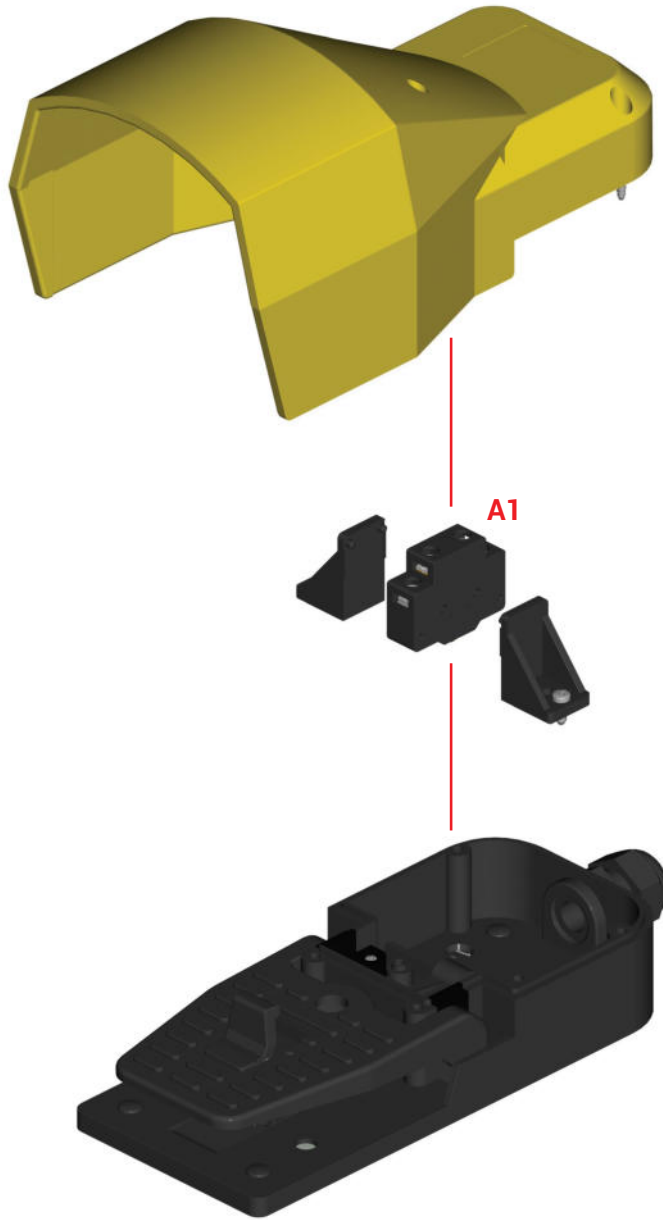
STANDARD 6200 FOOTSWITCHES

Footswitch type		No. of switches			Code
Simple	Double	PRSL0036XX 1NO+1NC snap action	PRSL0045PI 1NO+1NC slow action	PRSL0047PI 2NO+2NC slow action	
X		1			PF18620010
X		2			PF18620025
X			1		PF18620037
X				1	PF18620050
	X	2			PF18620053
	X	4			PF18620054
	X		2		PF18620055
	X			2	PF18620056

6100 FOOTSWITCH - ASSEMBLY DRAWING



Refer to the following table for descriptions of components: "Switches".



Refer to the following table for descriptions of components: "Switches".

COMPONENTS

Switches

Ref.	Drawing	Description	Scheme	Code
		1NO+1NC snap action switch		PRSL0036XX
A1		1NO+1NC slow action switch		PRSL0045PI
		2NO+2NC slow action switch		PRSL0047PI

